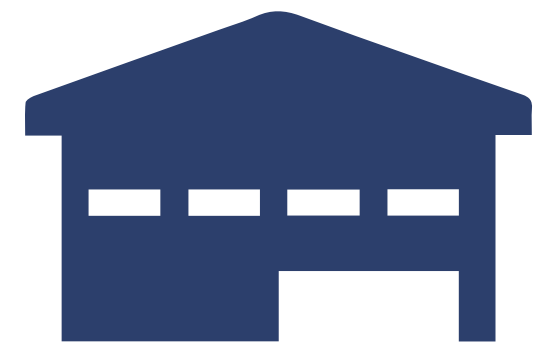




15
Streetcars
Needed
for USGT
Corridor



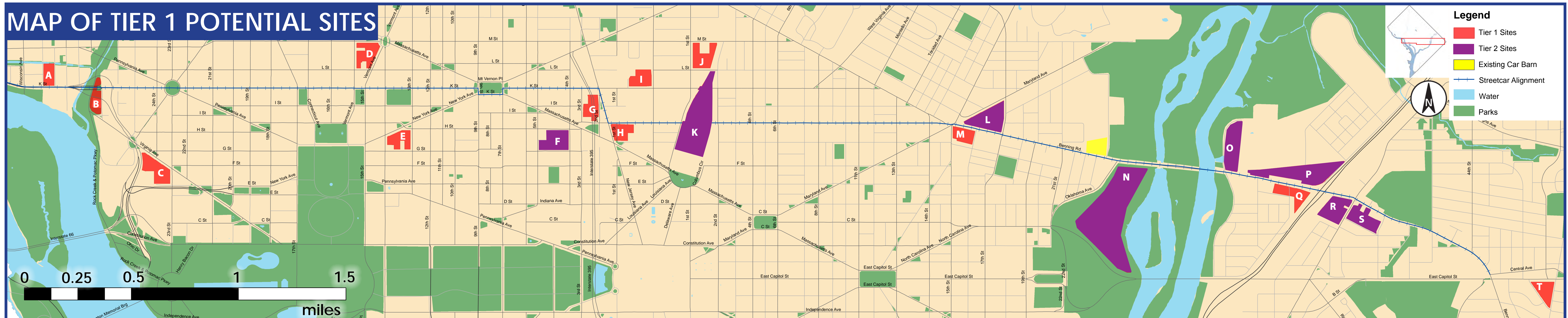
Need for New
Storage and
Maintenance
Facility

STORAGE AND MAINTENANCE FACILITY BOARD 1

With 15 new streetcar vehicles anticipated to extend service from Union Station to Georgetown, a second storage and maintenance facility is needed to house the expanded fleet. DDOT is preparing for this need by:

- Studying feasible sites for storage and maintenance along the entire east-west streetcar corridor
- Identifying criteria for operational and environmental feasibility
- Including up to three sites in the USGT EA

MAP OF TIER 1 POTENTIAL SITES



EVALUATION CRITERIA

Tier 1: Identification Round (20 Sites) Initial Selection of Sites to Evaluate

- At least 3.5 acres
- Has development capacity
- Within 1/3-mile of the alignment
- Not a Historic Landmark
- Not an actively used park space
- Not an active school facility
- Not a low- to mid-density residential development
- Not built or renovated since 1990

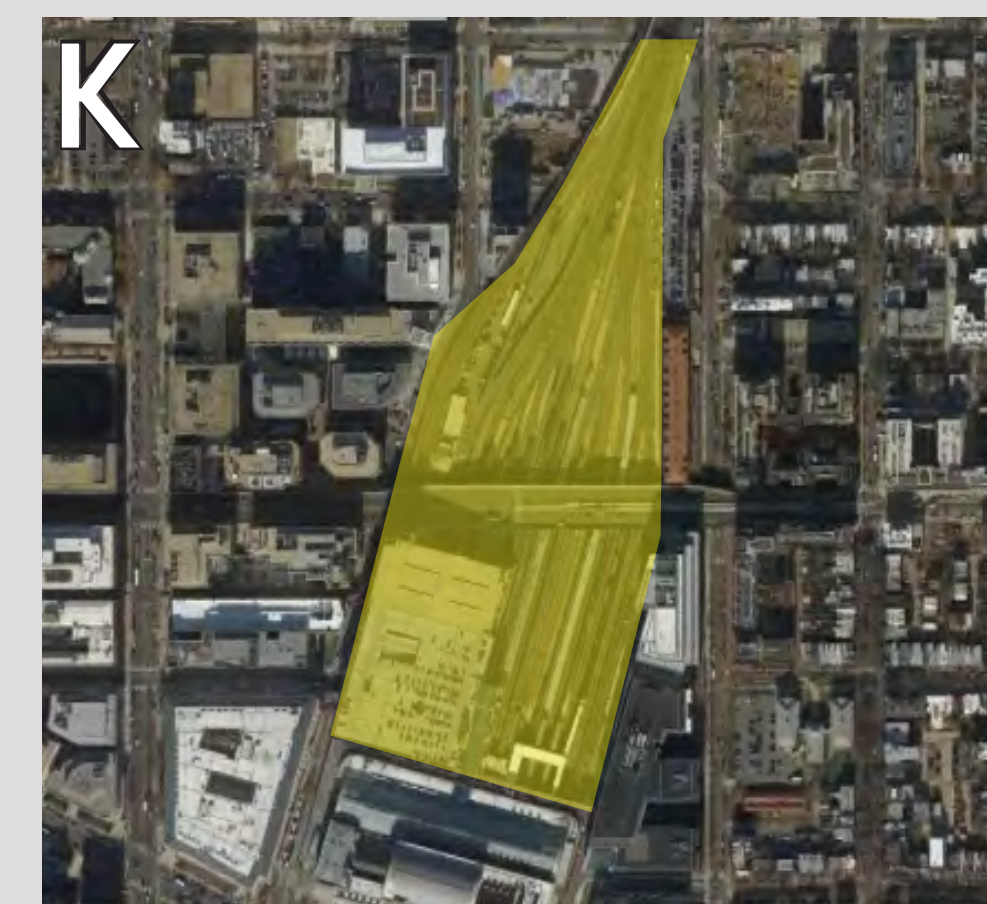
Tier 2: Shortlist Round (8 Sites) Create Shortlist of Sites

- Size** At least 4.3 acres; Higher points for larger sites
- Configuration** Dimensions of at least 310 feet by 610 feet; Extra points for a configuration of 2:1
- Potential for Displacement** Higher points for no displacements of existing land uses
- Environmental Justice** Higher points for lower proximity to low income and minority communities
- Location** Higher points when located closer to the alignment

AERIAL VIEWS OF TIER 2 SHORTLIST SITES



**Government Accountability
Office**
441 G Street NW
Total Acres: 6.39



Union Station
(Parking Garage and Rail Yard)
50 Massachusetts Ave NE
Total Acres: 23.36



Hechinger Mall
(assumes joint development)
1518 Benning Road NE
Total Acres: 8.58



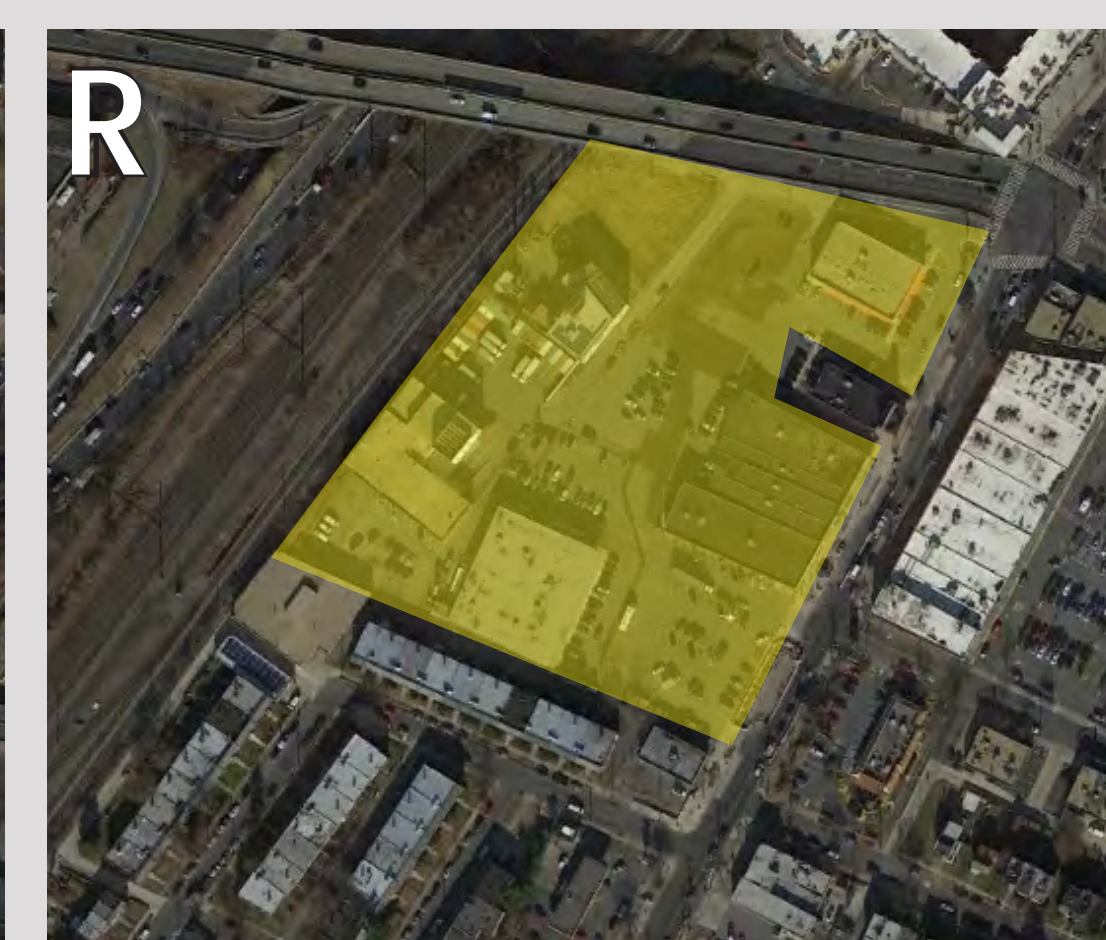
Lot 7
2615 Benning Road NE
Total Acres: 43.25



Pepco West #1
2934 Benning Road NE
Total Acres: 8.73



Pepco West #2
3398 Benning Road NE
Total Acres: 14.66



DC Eagle
Multiple (3932 Minnesota Ave NE)
Total Acres: 7.07



East River Park Shopping Center
Multiple (322 40th Street NE)
Total Acres: 6.14